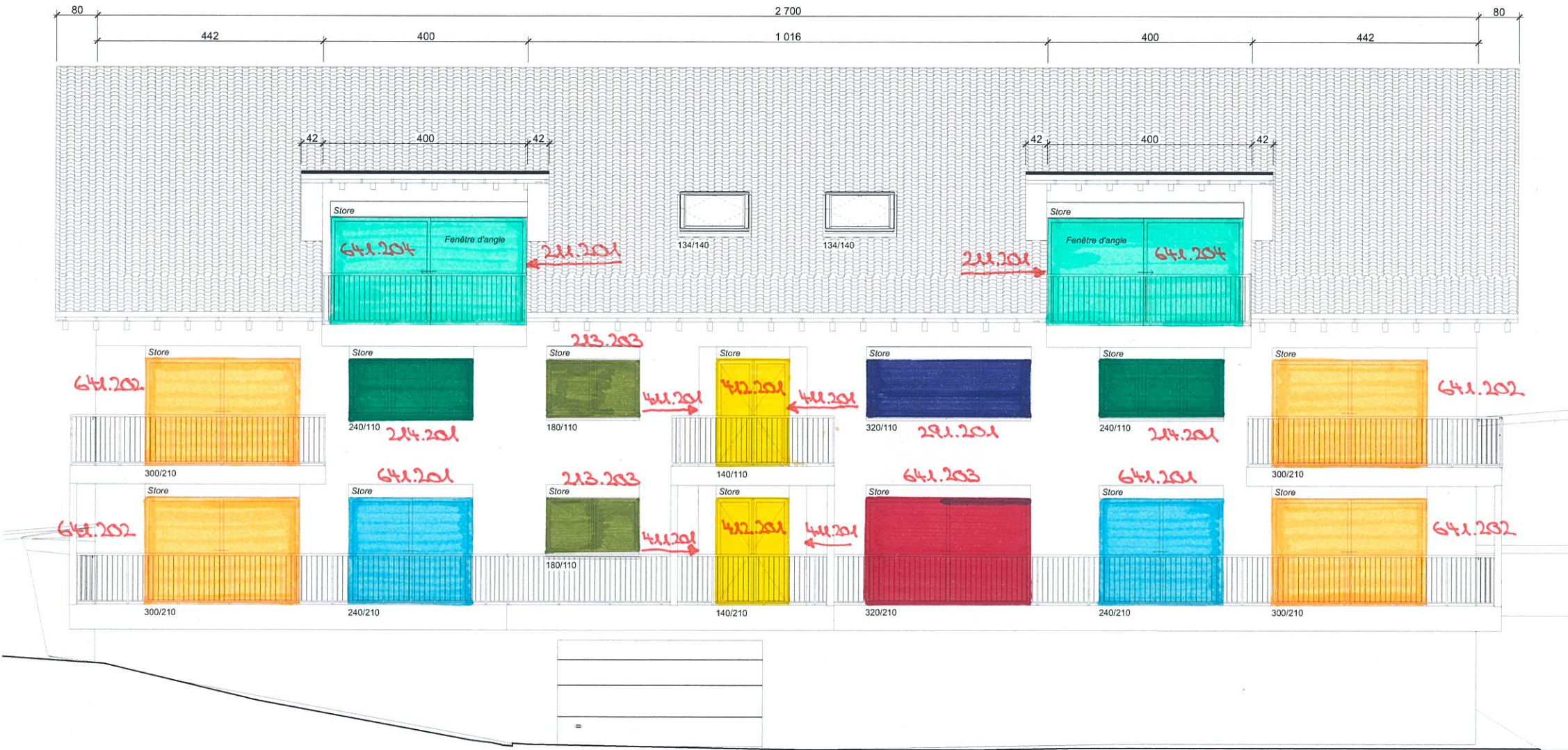
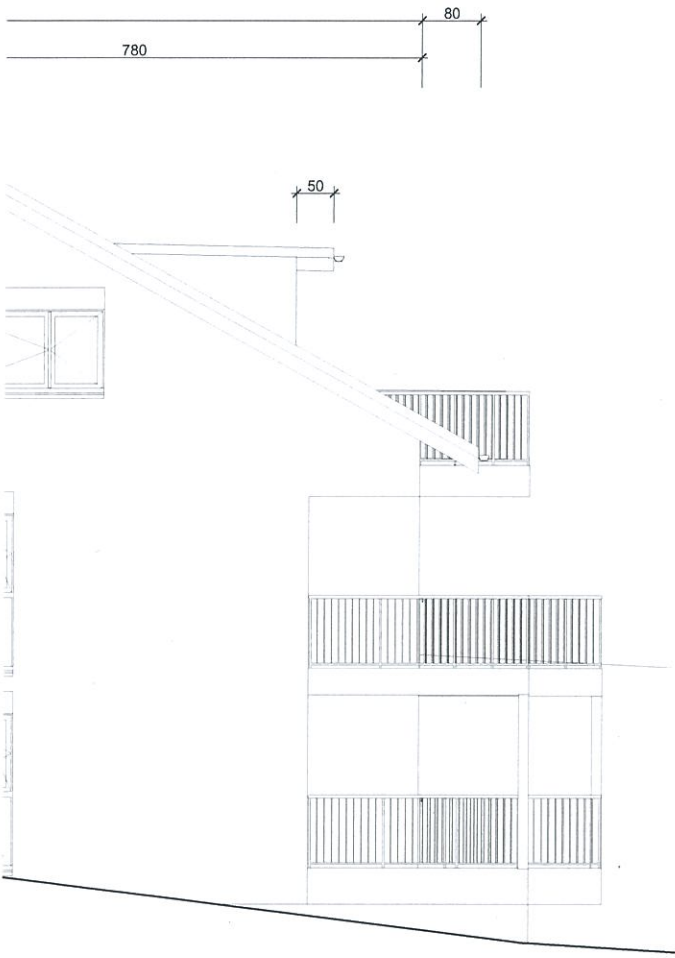


2230 MFH RUE DE CHATEAU
2720 TRAMELAN BE

AUSSCHREIBUNG
BKP 221.2
FENSTER AUS KUNSTSTOFF



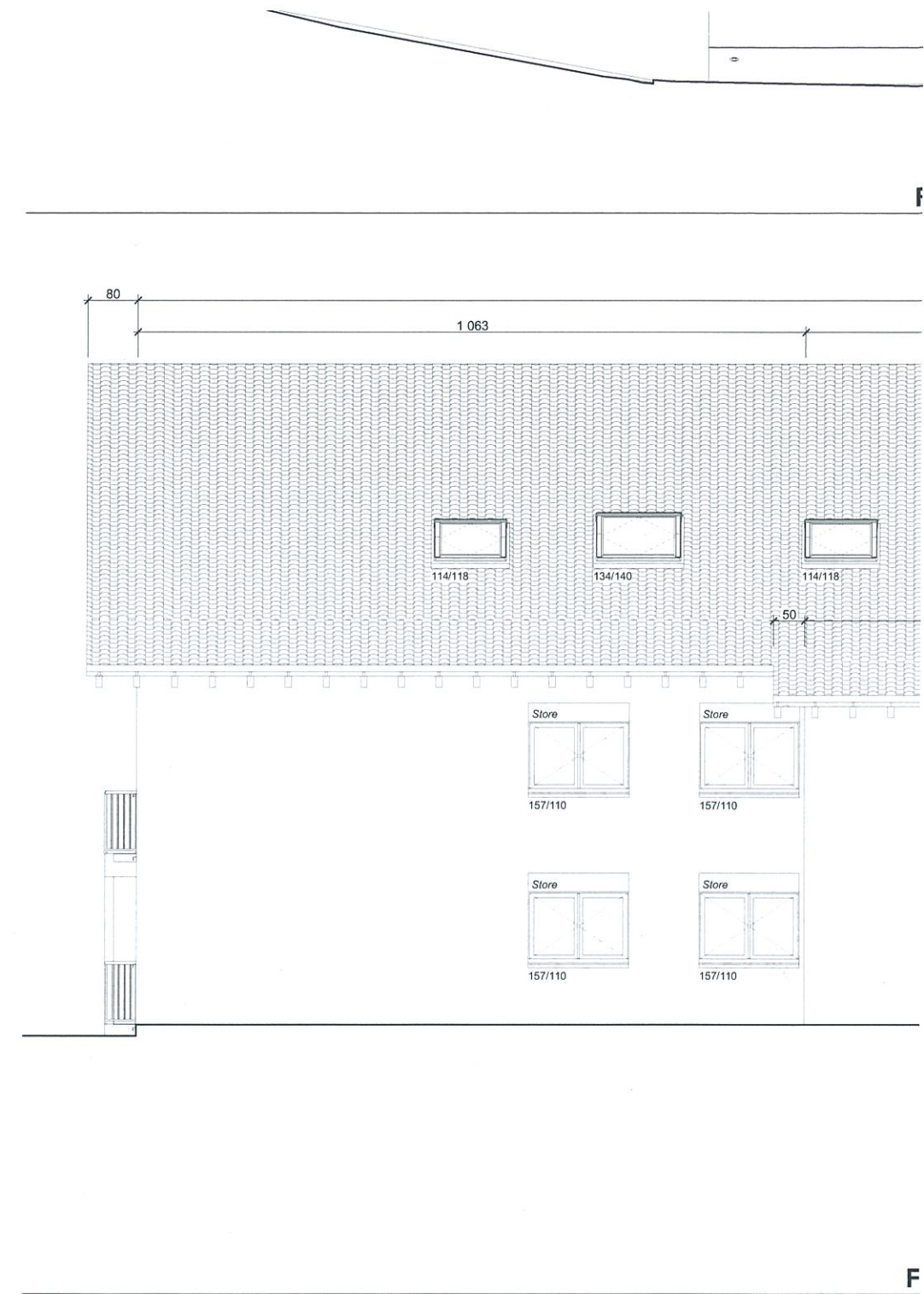
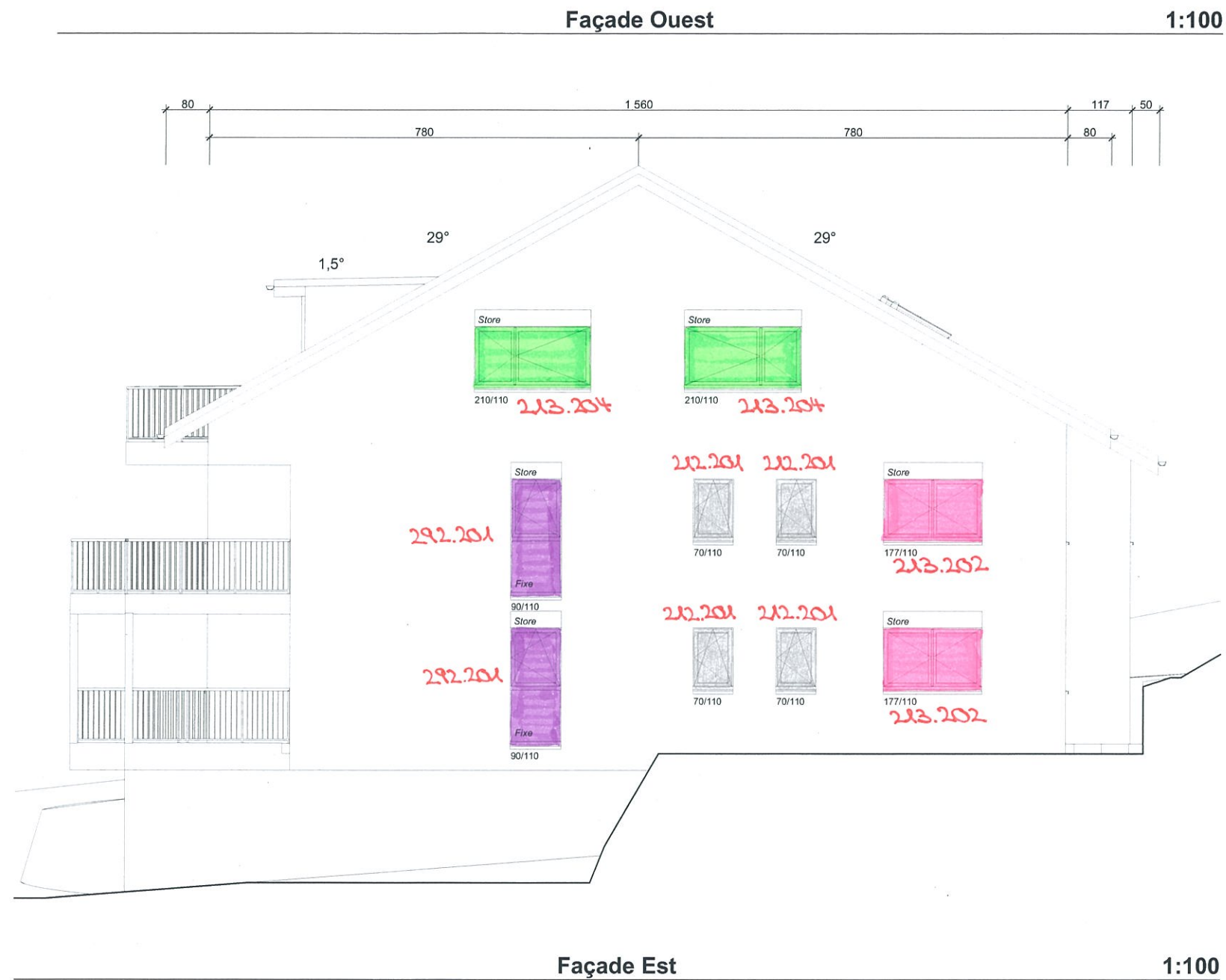
1:100

Façade Sud

1:100

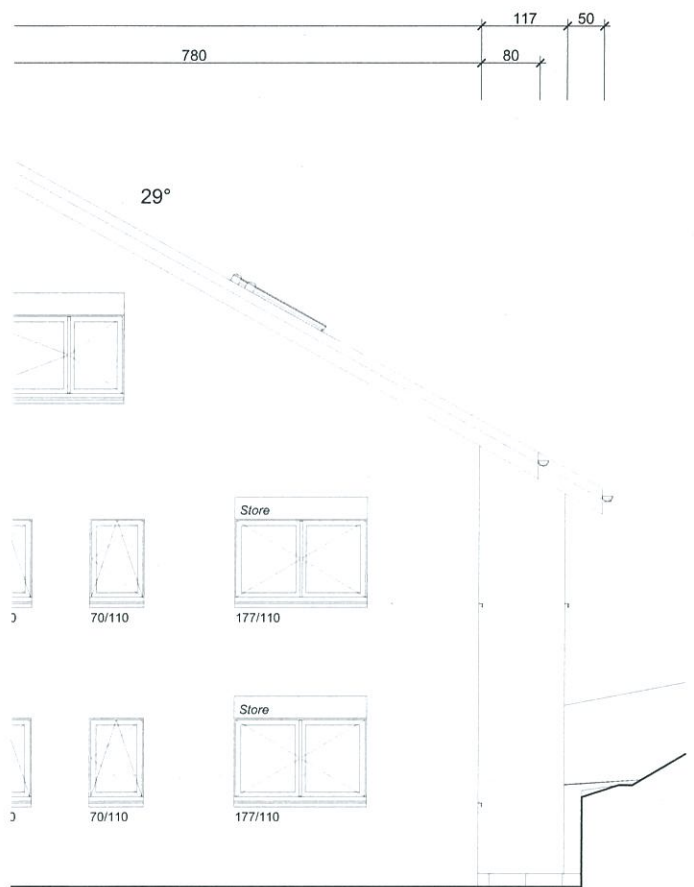
SÜDFASSADE

POSITIONSPLÄNE



Ostfassade

1:100



1:100

NORDFASSADE

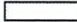





Façade Sud 1:100



Façade Nord 1:100

Parcelle 1708, 2720 Tramelan		Altitude (sol mor): Niv. ± 0.00 = ###
Maitre d'ouvrage: SIS SA Chemin des Blés 11, 2606 Corgémont		Echelle(s): 1:100
Phase du projet: EXECUTION		Date: 23.02.2022
N° de plan: 03-08	Nom du plan: Façades	Version:
X:\DATA\NENESS\Chemin des Blés SA - Tramelan\03_08 SIS SA - EXECUTION.jpx		Dessinateur: LF

LEGENDE

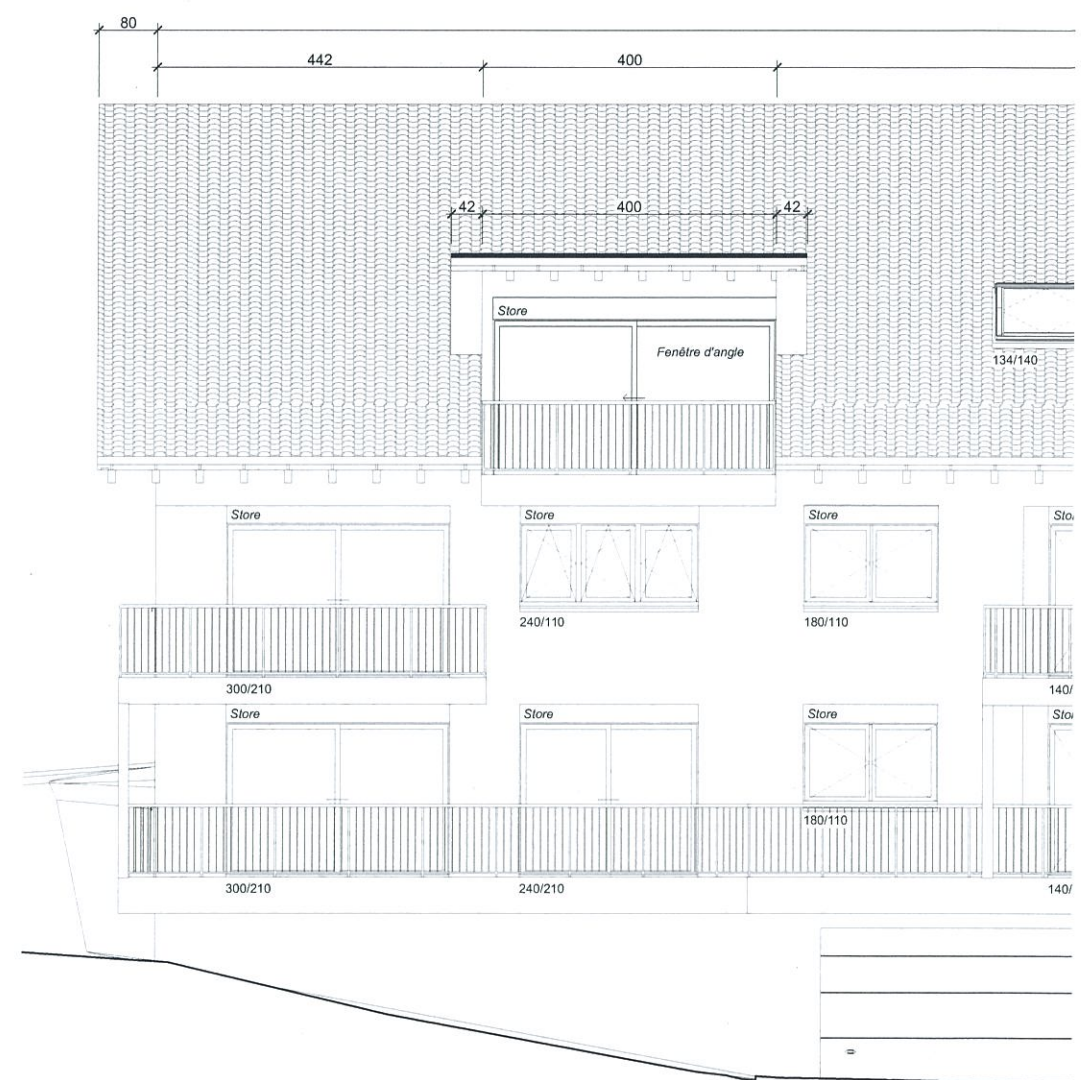
	Béton
	Briques ciment
	Briques TC isolées
	Briques TC
	Alba
	Isolation
FB	Fond brut
FF	Fond fini
FBF	Fond brut fini

Toutes les cotes sont bruts.
Les cotes de fenêtres et des portes sont à confirmer avec les fournisseurs



Façade Ouest

1:100



WESTFASSADE